

1956 FORD COLORS

"DUCO" STOCK, ORDER AND CODE NUMBER

Code and Part Number

***2213■**
 246-59542 Diamond Blue
 246-0953 (246-0097) White
 246-0519-H (246-0594-H) Organic Blue
 246-0785-H Blue-Toned Green
 246-0222 (246-025) Black

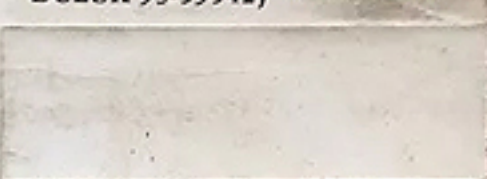
D
 (M-20J-523)



DUCO *2213■ } Diamond Blue
 DULUX 93-59542

***2214■**
 246-59543 Colonial White
 246-0953 (246-0097) White
 246-0630 (246-064) Ferrite Yellow
 246-0312-H Fast Red
 246-0222 (246-025) Black

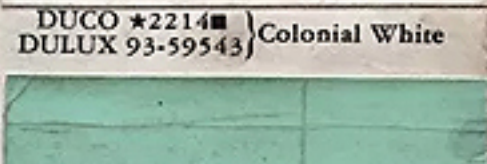
E
 (M-20J-524)



DUCO *2214■ } Colonial White
 DULUX 93-59543

***2215■**
 246-59545 Meadow Mist Green (Bleeder)
 246-0953 (246-0097) White
 246-0612-H Green Gold Toner
 246-0785-H Blue-Toned Green
 246-0630 (246-064) Ferrite Yellow

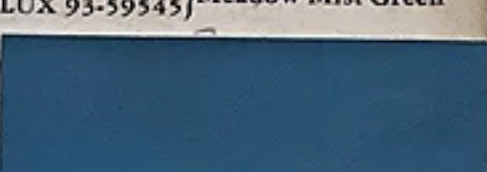
F
 (M-20J-527)



DUCO *2215■ } Meadow Mist Green
 DULUX 93-59545

***2216■**
 246-59547 Bermuda Blue
 246-0953 (246-0097) White
 246-0519-H (246-0594-H) Organic Blue
 246-0785-H Blue-Toned Green
 246-0222 (246-025) Black

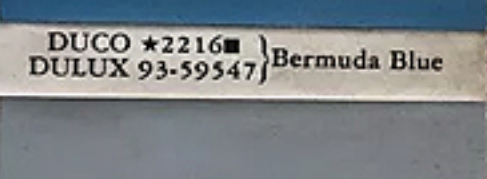
C
 (M-20J-529)



DUCO *2216■ } Bermuda Blue
 DULUX 93-59547

***2217■**
 246-59550 Platinum Gray
 246-0953 (246-0097) White
 246-0222 (246-025) Black
 246-0312-H Fast Red

H
 (M-20J-532)



DUCO *2217■ } Platinum Gray
 DULUX 93-59550

***2218-H■**
 202-59544-H Pine Ridge Green Metallic
 246-0785-H Blue-Toned Green
 246-0701-H (246-0751-H) Chrome Oxide Green
 202-081 Metallic Base (Coarse)

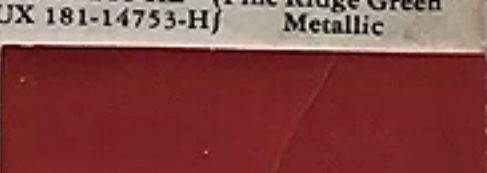
F
 (M-20J-525)



DUCO *2218-H■ } Pine Ridge Green
 DULUX 181-14753-H } Metallic

2219-H
 246-59548-H Fiesta Red †
 246-0383-H Light Red
 246-0953 (246-0097) White
 246-0381-H Dark Red
 246-0222 (246-025) Black

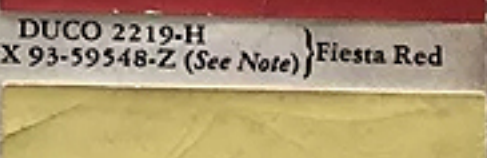
K
 (M-20J-530)



DUCO 2219-H } Fiesta Red
 DULUX 93-59548-Z (See Note)

***2220■**
 246-59549 Golden Glow Yellow †
 246-0953 (246-0097) White
 246-0679 (246-062) Yellow
 246-0630 (246-064) Ferrite Yellow
 246-0222 (246-025) Black

M
 (M-20J-531)



DUCO *2220■ } Golden Glow Yellow
 DULUX 93-59549

*A Du Pont mixing machine formula for DULUX Enamel is available.
 ■A Du Pont mixing machine formula for DUCO Lacquer is available.
 †For "Touch-Up Only." Not recommended for panel repair or over-all refinishing.



ISSUED OCTOBER 31, 1955

1956 FORD COLOR BULLETIN No. 25 (SHEET 2)

"DUCO" STOCK, ORDER AND CODE NUMBER

Code and Part Number

***2221-H**
 246-59551-H Mandarin Orange †
 246-0953 (246-0097) White
 246-0383-H Light Red
 246-0630 (246-064) Ferrite Yellow
 246-0222 (246-025) Black

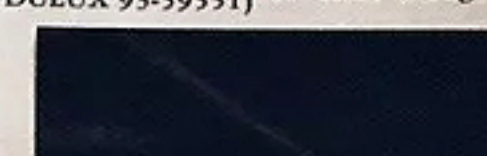
N
 (M-20J-533)



DUCO *2221-H } Mandarin Orange
 DULUX 93-59551

***2222**
 202-59541 Nocturne Blue Metallic
 246-0519-H (246-0594-H) Organic Blue
 246-0222 (246-025) Black
 202-081 Metallic Base (Coarse)

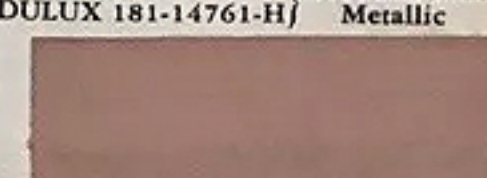
B
 (M-20J-521)



DUCO *2222 } Nocturne Blue
 DULUX 181-14761-H } Metallic

***2223■**
 246-59546 Buckskin Tan
 246-0953 (246-0097) White
 246-0312-H Fast Red
 246-0630 (246-064) Ferrite Yellow
 246-0222 (246-025) Black

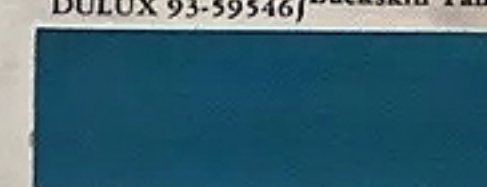
J
 (M-20J-528)



DUCO *2223■ } Buckskin Tan
 DULUX 93-59546

***2224■**
 246-59552 Peacock Blue
 246-0953 (246-0097) White
 246-0785-H Blue-Toned Green
 246-0519-H (246-0594-H) Organic Blue
 246-0222 (246-025) Black

L
 (M-20J-534)



DUCO *2224■ } Peacock Blue
 DULUX 93-59552-H

*A Du Pont mixing machine formula for DULUX Enamel is available.
 ■A Du Pont mixing machine formula for DUCO Lacquer is available.
 †For "Touch-Up Only." Not recommended for panel repair or over-all refinishing.

NOTE: Colors assigned "Z" suffix carry a special price. Consult your Distributor of Du Pont Refinishing Materials.

ORDER ONLY BY "DUCO" STOCK ORDER NUMBER

INTERIOR COLORS

DUCO
 Stock Order Number
 2285
 2286-H

Color
 Medium Brown Metallic
 Dark Brown Metallic

Part Number
 M-2J-540
 M-2J-541

NOTE: DUCO mixing machine formulas only are available for the following 1956 Ford Interior Colors.

DUCO
 Formula File Number
 59595
 59596

Color
 Gray Metallic
 Medium Green Metallic

Part Number
 M-2J-536
 M-2J-538

1956 FORD COLOR CODE NUMBERS

Over-all combinations are listed under the caption "Code and Part Number."

1956 Ford two-tone combinations are not available but are identified on the cars by their respective color letter symbols. The first letter being the Upper color, the second being the Lower color.

DUCO tinting colors, for the various formulas, are shown where available. These colors are listed in the order of their importance in the event that tinting is necessary.

Color code letters appear on the left front body pillar extension.

NOTE: Most colors in this bulletin are available in both DUCO and DULUX; however, it should be noted that it is not always possible to make close matches in DUCO to DULUX colors and vice versa.

Every possible precaution is taken to provide the refinishing trade with accurate DUCO and DULUX color matches. Due to circumstances beyond our control, we cannot be responsible for inaccurate color matches resulting from changes in standards by automobile manufacturers without our knowledge, change of car colors on aging, and color variances caused by application methods, etc. We will assume responsibility only for factory color matches to established Du Pont color standards.

As the accuracy of color matches made with the Du Pont Color Blending Service depends on the individual operating the equipment, we will assume responsibility only for the uniformity of our mixing enamels and lacquers.

SEE OTHER SIDE FOR 1952-1953-1954 AND 1955 FORD COLORS

BULLETIN SUPPLEMENT No. 25-A

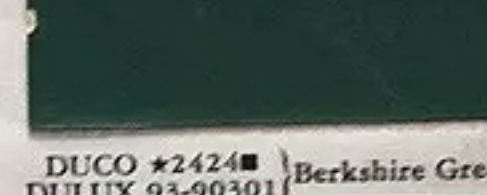
1956 FORD SPRING COLORS

"DUCO" STOCK, ORDER AND CODE NUMBER

Code and Part Number

***2424■**
 246-90301 Berkshire Green
 246-0953 (246-0097) White
 246-0785-H Blue-Toned Green
 246-0630 (246-064) Ferrite Yellow †
 246-0222 (246-025) Black

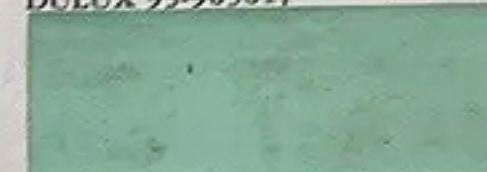
V
 (M-20J-679)



DUCO *2424■ } Berkshire Green
 DULUX 93-90301

***2425**
 246-90302 Spring Mist Green
 246-0953 (246-0097) White
 246-0785-H Blue-Toned Green
 246-0630 (246-064) Ferrite Yellow
 246-0679 (246-062) Yellow
 246-0222 (246-025) Black

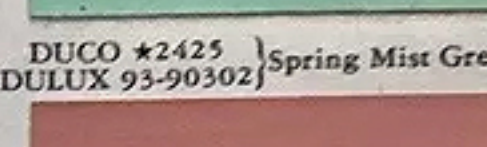
W
 (M-20J-680)



DUCO *2425 } Spring Mist Green
 DULUX 93-90302

2426-H
 246-90300-H Sunset Coral
 246-0953 (246-0097) White
 246-0383-H Light Red
 246-0312-H Fast Red
 246-0222 (246-025) Black

Y
 (M-20J-655)



DUCO 2426-H } Sunset Coral
 DULUX 93-90300-H

*A Du Pont mixing machine formula for DULUX Enamel is available.
 ■A Du Pont mixing machine formula for DUCO Lacquer is available.

